

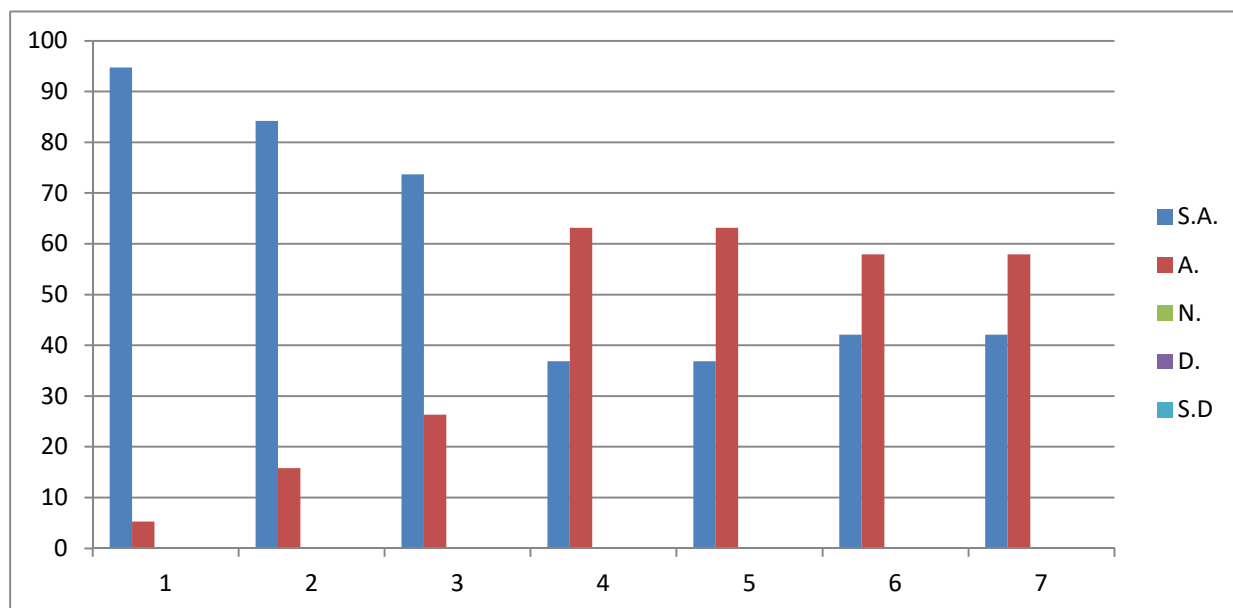
# REPORT OF ANALYSIS OF FEEDBACK ON CURRICULUM COLLECTED FROM DIFFERENT STAKEHOLDERS

Academic year – 2020 - 21

## Students Feedback:

The students are the most important stakeholders of Higher Education systems. The interest and participation of students at all levels in both internal quality assurance and external quality assurance have to play a central role. We have collected feedback from our third year students of BA course. A special five point scale feedback form on the curriculum is development. We have received total 12 student's feedback on the syllabus of the BA programmes designed by the Swami Ramanand Teerth Marathwada University, Nanded .

Sr. No.	Curriculum Evaluation Points	Response in %				
		Strongly Agree	Agree	Neutral	Disagree	Strongly Disagree
1.	Curriculum updated enough	94.73	5.26	00	00	00
2.	Curriculum content interesting	84.21	15.78	00	00	00
3.	Curriculum fulfilling your expectation	73.68	26.31	00	00	00
4.	Curriculum helping in developing your personality	36.84	63.15	00	00	00
5.	Curriculum applicable in your daily life	36.84	63.15	00	00	00
6.	Curriculum is relevant for the solution of local problems	42.10	57.89	00	00	00
7.	Need to include skill based content in current syllabus	42.10	57.89	00	00	00



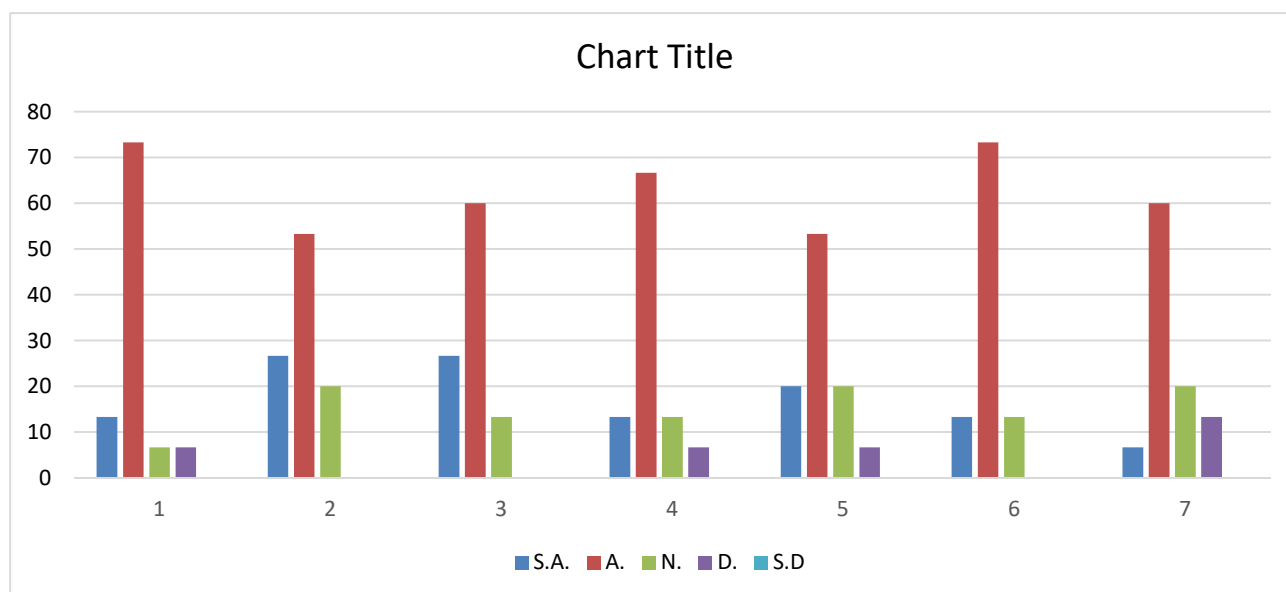
On an average 58.65% students are strongly agree and 41.35% are agree with the current syllabus of the BA programmes designed by the Swami Ramanand Teerth Marathwada University, Nanded.

## Teachers Feedback:

The college is affiliated to the Swami Ramanand Teerth Marathwada University, Nanded and follows the prescribed curriculum. Still feedback on curriculum is taken by the respective subject teachers regarding suggestions on improvement of the syllabus. We have received 15 teachers feedback on the curriculum and analyzed.

Sr. No.	Curriculum Evaluation Points	Response in %				
		Strongly Agree	Agree	Neutral	Disagree	Strongly Disagree
1.	Current syllabus is need based	13.33	73.33	6.66	6.66	0
2.	Curriculum having current content	26.66	5.33	20	0	0

3.	Programmes outcomes of the syllabi is well defined	26.66	60	13.33	6.66	0
4.	Curriculum having good academic flexibility	13.33	66.66	13.33	6.66	0
5.	The course content fulfils the need of students	20	53.33	20	6.66	0
6.	Need of review of the syllabus	13.33	73.33	13.33	0	0
7.	Curriculum enhanced employability	6.66	60	20	13.33	0

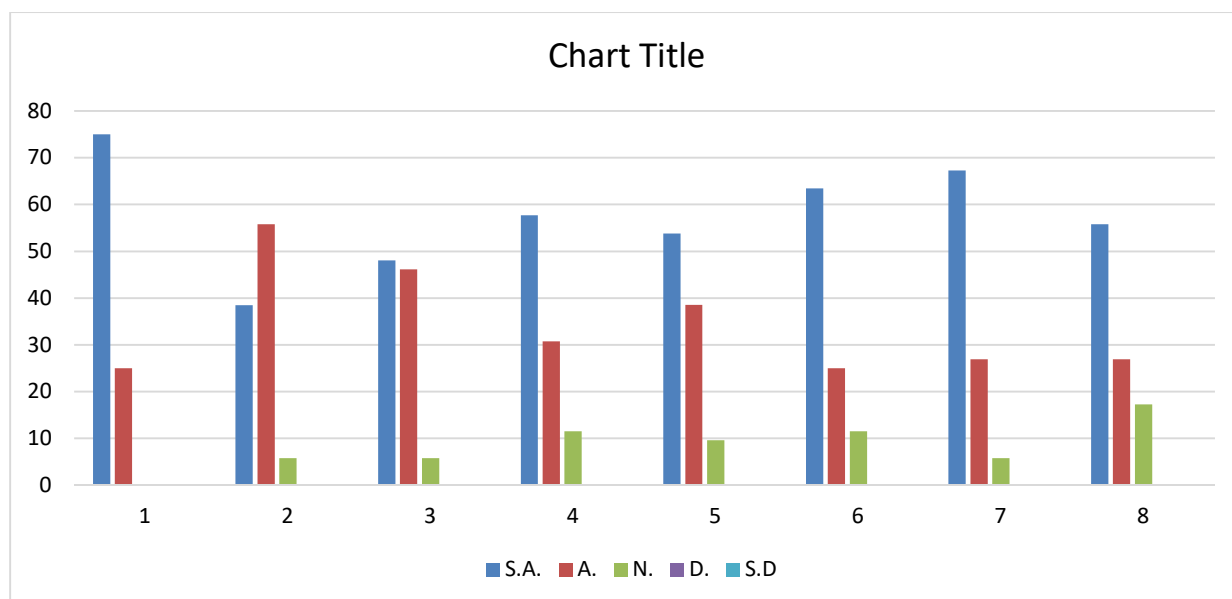


On an average 17.13% teachers are strongly agree, 55.99% are agree, 15.23% are neutral and 5.71% are disagree with the current syllabus of the BA programmes designed by the Swami Ramanand Teerth Marathwada University, Nanded.

## Alumni Feedback:

Our alumni are valuable for us. They provide us the inputs regarding improvement in facilities and employability of our students. We appeal our alumni to provide there sincere feedback on curriculum. We have received total 52 alumni feedback from 2016-21 on syllabus designed by Swami Ramanand Teerth Marathwada University, Nanded. Based on the comments of the alumni, the analysis is done as follows

Sr. No.	Curriculum Evaluation Points	Response in %				
		Strongly Agree	Agree	Neutral	Disagree	Strongly Disagree
1.	Need of syllabus updating	75.0	25.0	0	0	0
2.	Course content is interesting	38.47	55.76	5.77	0	0
3.	Course curriculum intellectually stimulate you	48.07	46.16	5.77	0	0
4.	Course curriculum fulfilling your expectations	57.69	30.77	11.54	0	0
5.	Programme help in developing your personality	53.84	38.54	9.62	0	0
6.	Courses meet contemporary requirements	63.46	25	11.54	0	0
7.	Reading material regarding curriculum is easily available	67.30	26.92	5.77	0	0
8.	Syllabus enhances employability	55.77	26.92	17.30	0	0



On an average 57.45% students are strongly agree, 34.38% are agree and 8.42% are neutral with the current syllabus of the BA programmes designed by the Swami Ramanand Teerth Marathwada University, Nanded.



A handwritten signature in blue ink, appearing to read "nt Shirsag".

**Principal**  
Kai. Bapusaheb Patil Ekambekar  
Mahavidyalaya Udgir Dist. Latur